

THE USE OF DIGITAL TOOLS IN ASSESSING IMPACTS ON THE HISTORIC ENVIRONMENT



HISTORIC
ENVIRONMENT
SCOTLAND

ÀRAINNEACHD
EACHDRAIDHEIL
ALBA

HISTORIC ENVIRONMENT SCOTLAND AND EIA

We are the **lead public body** set up to investigate, care for and promote Scotland's **historic environment**.

We are identified through regulations as a '**Consultation Body**' in the preparation and review of Environmental Impact Assessment (EIA) Reports.



<https://canmore.org.uk/collection/1118476>



HISTORIC
ENVIRONMENT
SCOTLAND

ÀRAINNEACHD
EACHDRAIDHEIL
ALBA

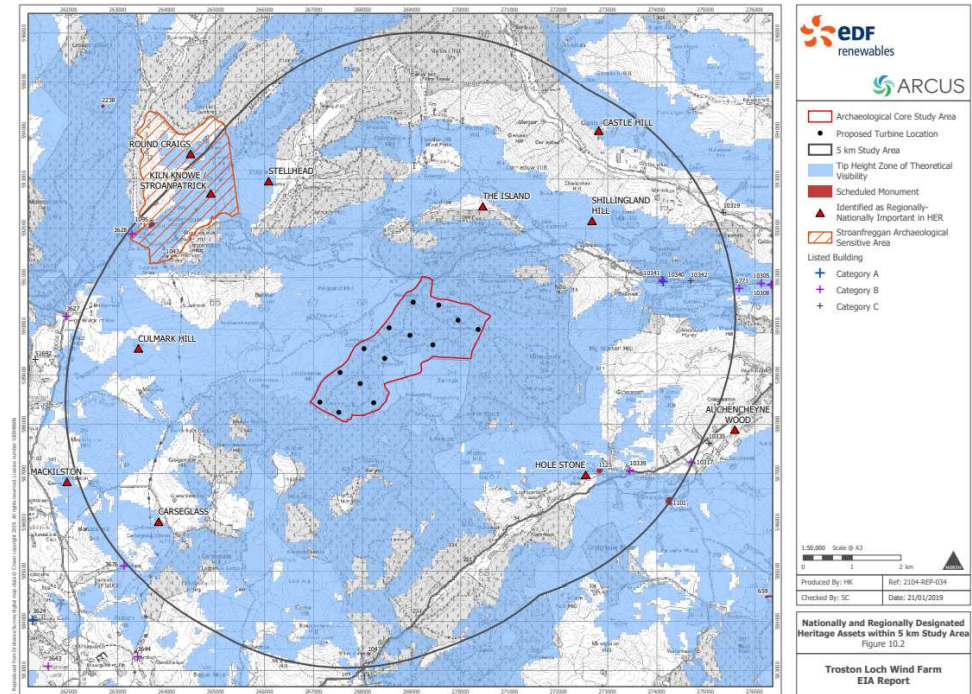
THE TREND FOR DIGITAL IN EIA

FROM ZTV MODELLING TO FULLY DIGITISED EIA REPORTS

Digital technology has been used increasingly in the assessing and reporting of environmental impacts.

Some tools we are already familiar with.

The trend has toward Digital has been accelerated with COVID-19 restrictions.



THE TREND FOR DIGITAL IN EIA

THE SCOTTISH GOVERNMENT'S DIGITAL STRATEGY



DIGITAL AS A CONSULTATION TOOL

WHERE CAN DIGITAL MAKE A DIFFERENCE?

Digital platforms can make EIA more accessible, engaging and user friendly for consultees and the public.

They can create efficiencies and reduce paper waste.



HISTORIC
ENVIRONMENT
SCOTLAND

ÀRAINNEACHD
EACHDRAIDHEIL
ALBA

ON-LINE PLANNING PORTALS

This website requires cookies to run. [I Understand](#)



The Scottish Government

Riaghaltas na h-Alba

Energy Consents Unit

[Home](#)

[Search](#)

[Contact us](#)

[Help Page](#)

[Register](#)

[Login](#)

Case

Documents

Please Log in/Register to turn notification preferences on/off for this case.

All [232]

Application Documents [169]

Consultation Responses [42]

Determinations [2]

Other [1]

Public Representations [18]

↕ Date Received	↕ Publication Date	↕ Document Category	↕ Description
20 Feb 2019	25 Feb 2019	Application Documents	Design Statement
20 Feb 2019	25 Feb 2019	Application Documents	Planning Statement
20 Feb 2019	21 Feb 2019	Application Documents	Vol 1 0Table of Contents
20 Feb 2019	25 Feb 2019	Application Documents	Vol 1 Chapter 01 - Introduction
20 Feb 2019	25 Feb 2019	Application Documents	Vol 1 Chapter 02 - EIA Methodology







HISTORIC
ENVIRONMENT
SCOTLAND

ÀRAINNEACHD
EACHDRAIDHEIL
ALBA

CROSS TAY LINK ROAD (CTLR)

DIGITAL EIA SCOPING REPORT

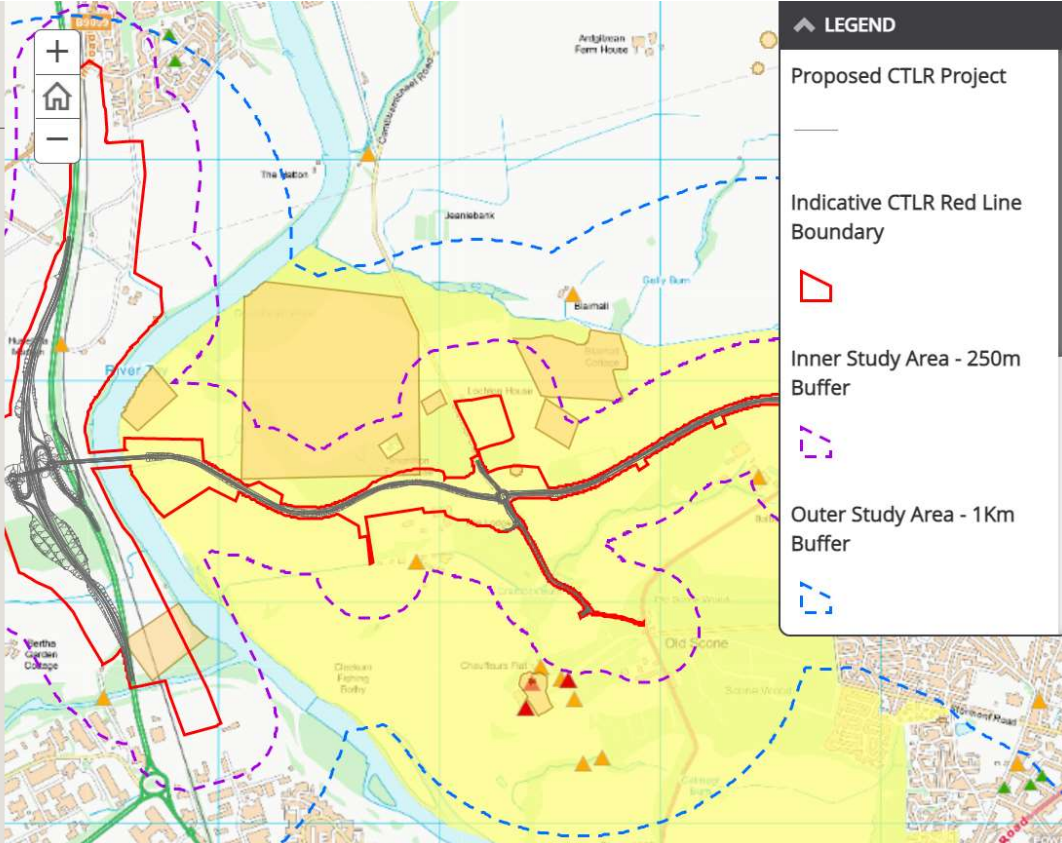
CTLR EIA Scoping Report    **SWECO** 

Cultural Heritage

Baseline Conditions

Within the CTLR Project study area there are Category A, B and C listed buildings (which are predominately concentrated in Scone Palace and Scone) and there are scheduled monuments scattered throughout the study area. *Please see the map to the right and use the + to zoom in. Please click on each attribute for more information.*

Within 250m of the CTLR Project there are approximately 50-60 previously recorded non-designated heritage assets; 10 of which lie within the limits of the indicative Red Line Boundary (RLB), mainly within the area immediately east of the River Tay. The distribution of cultural heritage assets along the route reflects that within the wider landscape, with the greatest density of heritage assets to the east of the River Tay. Fewer assets are located in the central section of the Project. There are no recorded assets within the eastern sections of the CTLR Project.

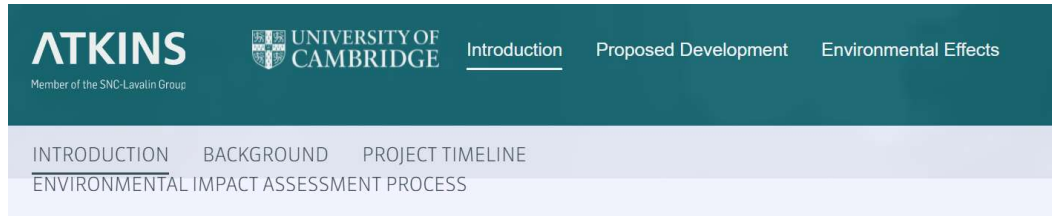


LEGEND

- Proposed CTLR Project
- Indicative CTLR Red Line Boundary
- Inner Study Area - 250m Buffer
- Outer Study Area - 1Km Buffer

WEST CAMBRIDGE MASTERPLAN

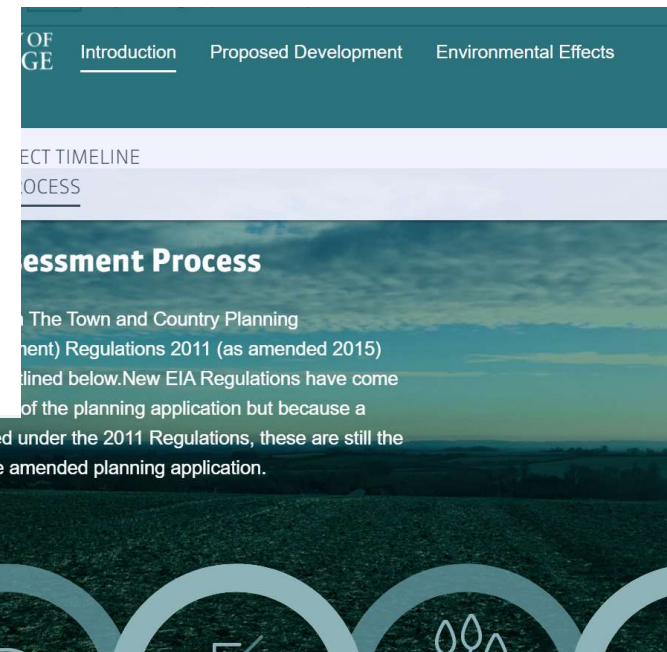
DIGITAL EIA REPORT (NTS)



Introduction

The University of Cambridge is seeking to secure outline planning permission for the development of the West Cambridge site for academic and commercial use and associated facilities.

An existing masterplan, which was approved in 1999 and reviewed in 2004, forms the basis of the current



ORKNEY TRANSMISSION INFRASTRUCTURE PROJECT VIRTUAL REALITY VISUALISATIONS



DIGITAL AS AN ASSESSMENT TOOL

WHERE CAN DIGITAL TECHNOLOGY AID ASSESSMENT OF IMPACTS ON THE HISTORIC ENVIRONMENT?

Digital technology can also be helpful in understanding and assessing impacts on the historic environment.

We have seen new tools which can assist with this.



SCOPING POTENTIAL IMPACTS

DIGITAL DOWNLOADS



HISTORIC
ENVIRONMENT
SCOTLAND

ÀRAINNEACHD
EACHDRAIDHEIL
ALBA

Home

Search

Downloads

Portal

Welcome to the Historic Environment Portal, where you can search for records, comment on designation proposals and scheduled monument consent applications in progress, and download datasets.

Following the Scottish Government's announcement our sites in mainland Scotland are closed. [Find out more](#)



Search

Search for designation records, scheduled monument consent applications, and decisions. It is important to read our



Downloads

GIS datasets, feeds and web services.



More about us

Find out about places to visit, learning resources and Historic Environment Scotland news.

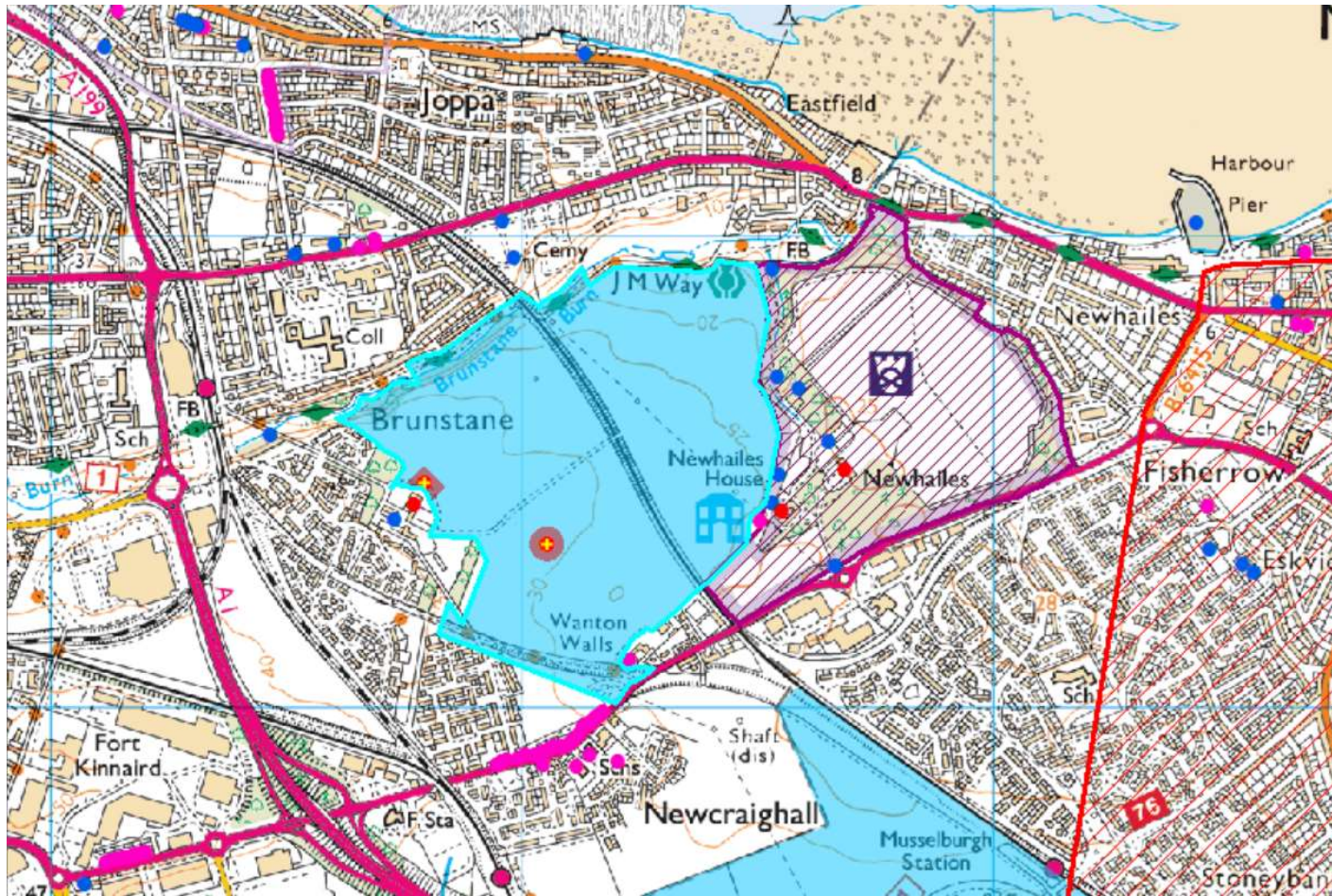


HISTORIC
ENVIRONMENT
SCOTLAND

ÀRAINNEACHD
EACHDRAIDHEIL
ALBA

SCOPING POTENTIAL IMPACTS

DIGITAL MAPPING – ARCGIS

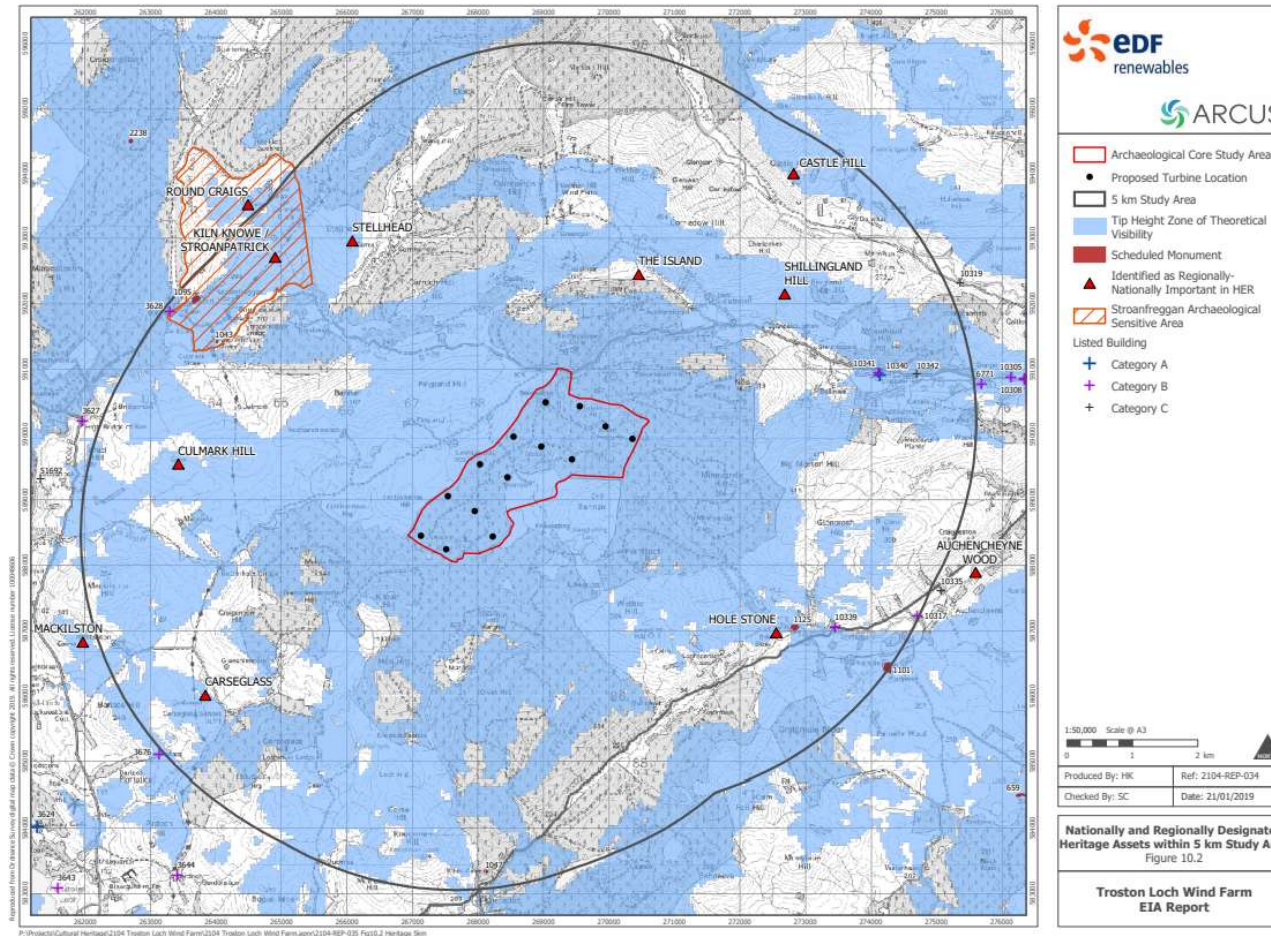


HISTORIC
ENVIRONMENT
SCOTLAND

ÀRAINNEACHD
EACHDRAIDHEIL
ALBA

SCOPING POTENTIAL IMPACTS

COMPUTER MODELLING – ZTV INFORMATION

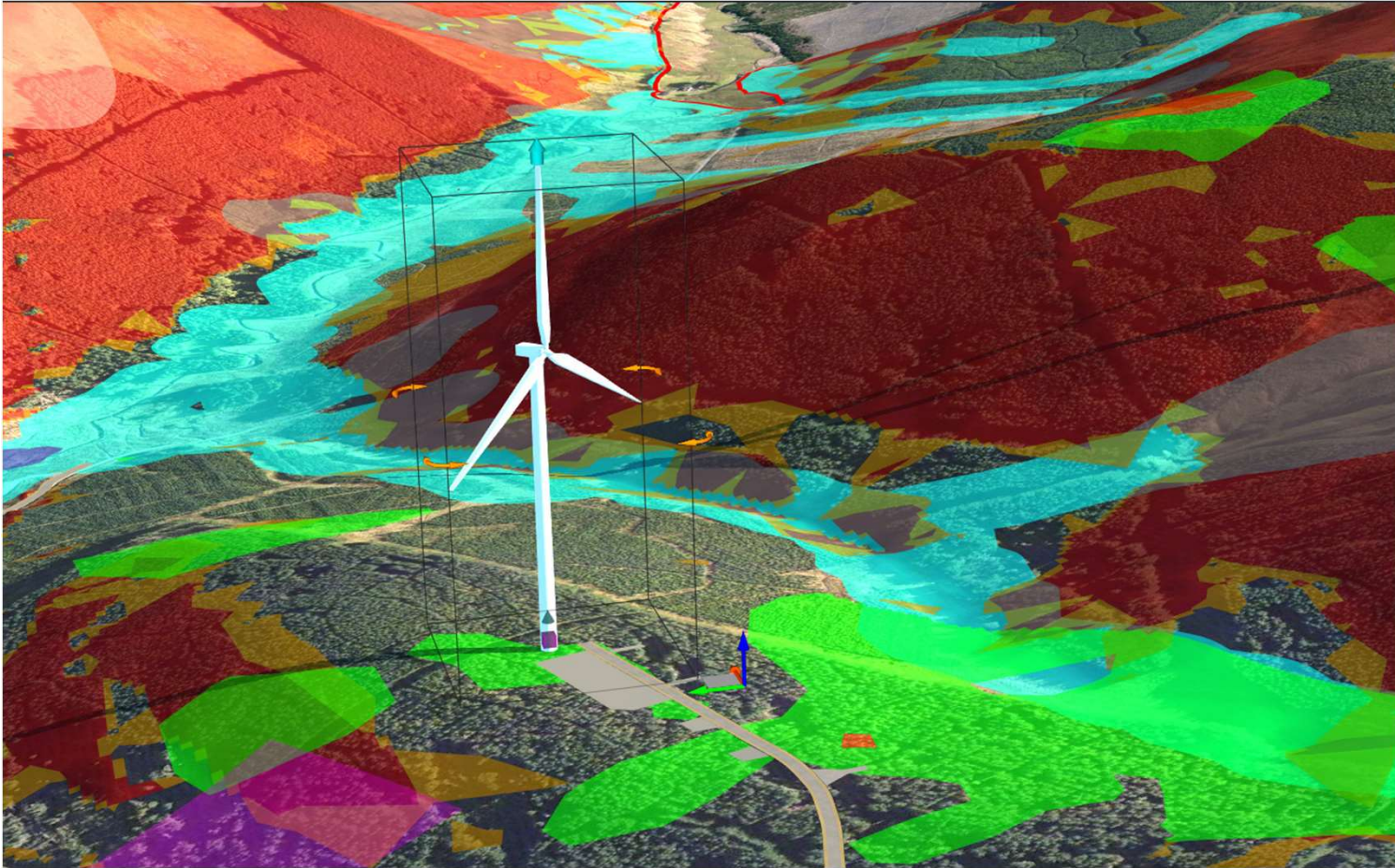


HISTORIC
ENVIRONMENT
SCOTLAND

ÀRAINNEACHD
EACHDRAIDHEIL
ALBA

SCOPING POTENTIAL IMPACTS

WINDFARM MODELLING – AUTODESK INFRAWORKS



HISTORIC
ENVIRONMENT
SCOTLAND

ÀRAINNEACHD
EACHDRAIDHEIL
ALBA

SCOPING POTENTIAL IMPACTS

WINDFARM MODELLING – AUTODESK INFRAWORKS



HD
HEIL
MAP
LACH
ALBA

ASSESSMENT OF IMPACTS

VIRTUAL REALITY & FLYTHROUGH VISUALISATIONS



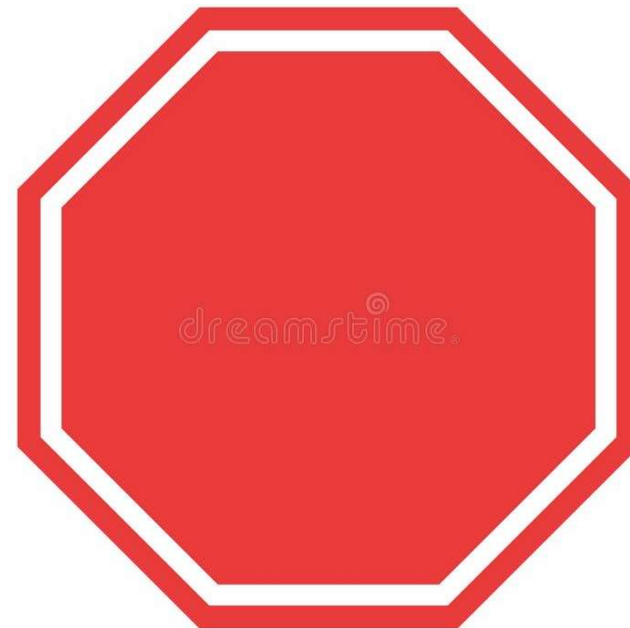
ASSESSMENT OF IMPACTS

VIRTUAL REALITY & FLYTHROUGH VISUALISATIONS



NOTES OF CAUTION

- **Automation cannot replace professional judgement!**
- **Accuracy of Data / Standardisation**
- **Presentation of Environmental Information**
- **Access and Security**
- **Inequalities**



ANY QUESTIONS?



Alison.Baisden@hes.scot